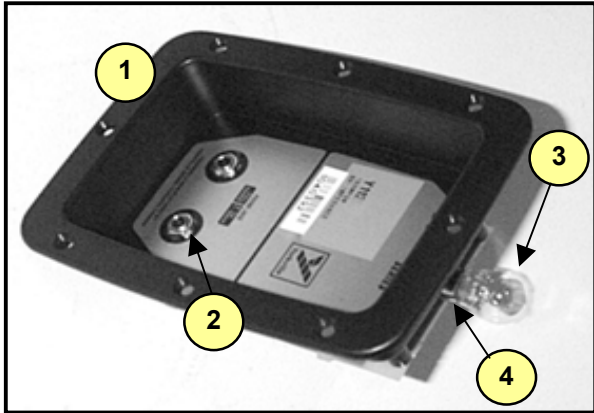




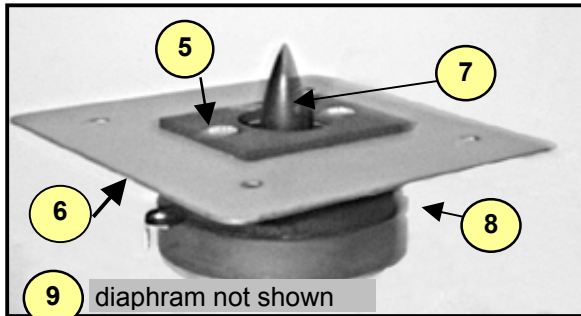
Y115M

Performance Series

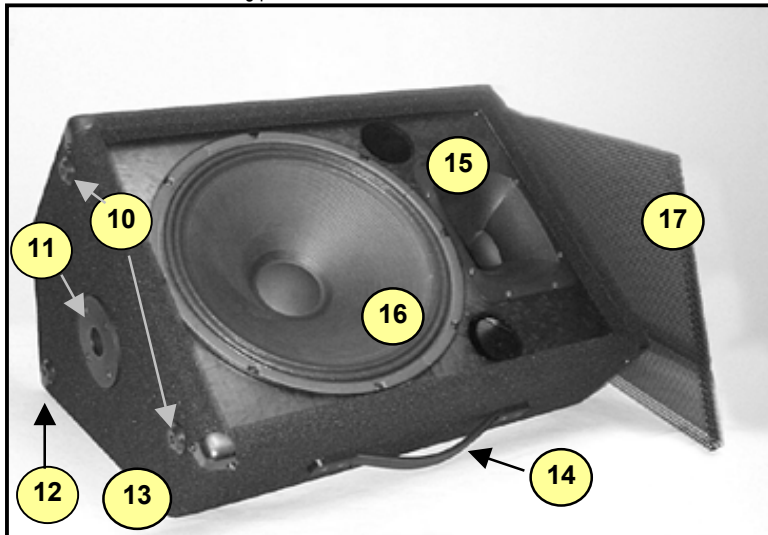
applicable to serial numbers prior to 104xxxx



Crossover Dish



HF Driver shown with mounting plate



Front view with grille removed

#	Part#	Description
Labeled Components		
1	8511	BLACK XOVERDISH - PLASTIC
2	3924	1/4" JCK PCB MT VERT 2XTIP HI-CURRENT
3	3647	12V 18W SC BAYONET #1141 BULB
4	3641	S.C. BAYONET WIRE SOCKET TINNED
5	8879	M5 X 10 DIN 7985 MS ZINC SCREW
6	M694	GENERIC DRIVER SUPPORT*
7	N252PP	N252 REPLACEMENT PHASE PLUG
8	N252XN	8R 30W 1"DRIVER RCF-N252XN
9	M-73	N252 REPLACEMENT DIAPHRAM
10	8547	PLASTIC FOOT BLACK
11	8484	ADAPTOR,SPEAKER STAND,PLASTIC,BLACK
12	8562	CORNER, 3 LEGS, BLACK OXIDE
13	8569	CORNER, 2 LEGS NO LIP BLACK OXIDE
14	8458	10.5" STRAP HANDLE, PLASTIC COVERS
15	H07A	HORN 60 X 40 1" STY 2000HZ
16	7311	15" 8R 200WPGM SPEAKER
17	z245	Y115M GRILL*
18	8239	"Y" LOGO "Y" SERIES LARGED DOMED

*NOTE: Replacement grills & HF Driver supports are 'Special-Order' and are only available while the model is in production.

**Real Gear.
Real People.**