
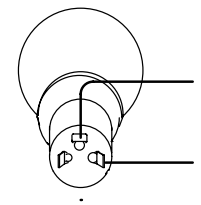
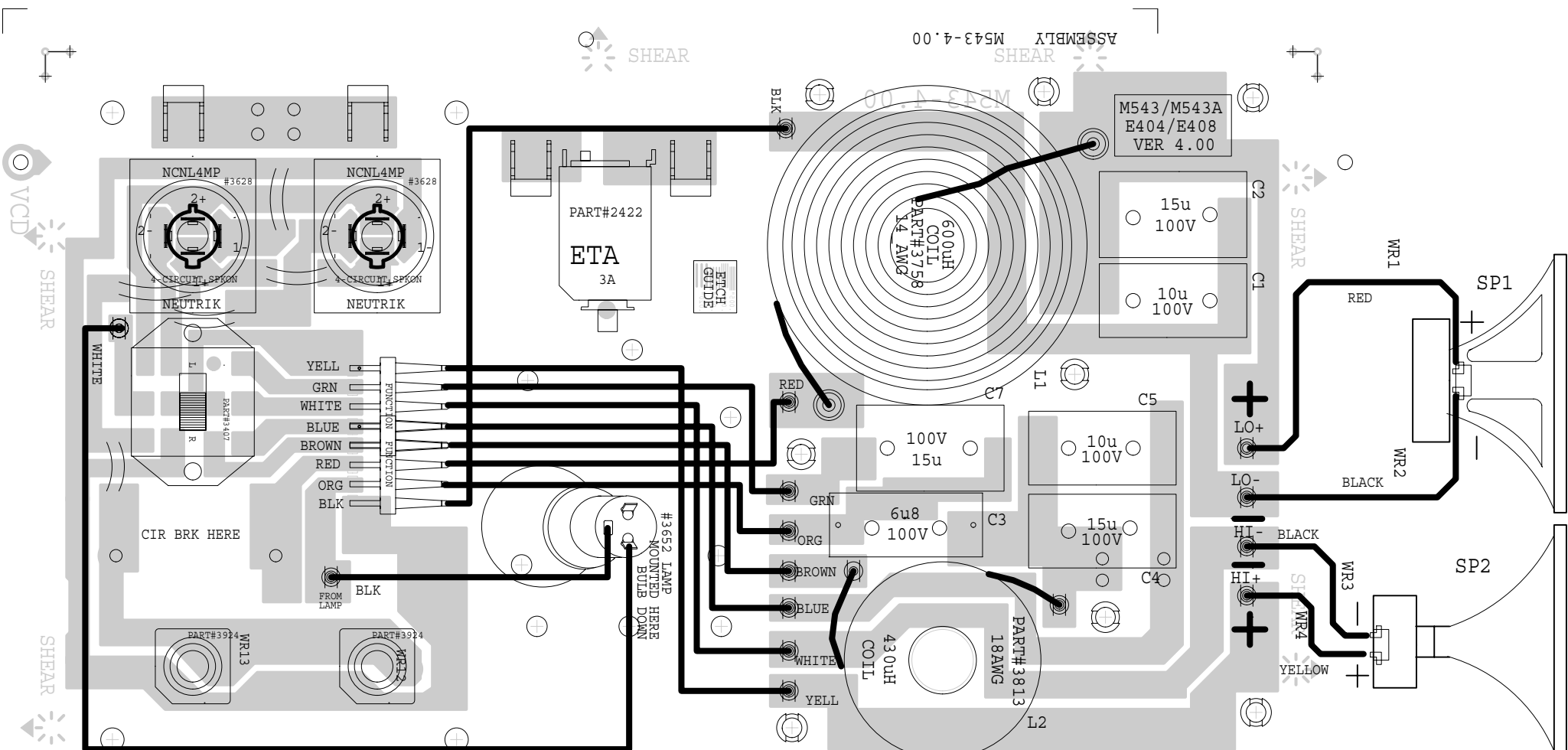


M543.SCH DATABASE HISTORY

MODEL(S) :-		E404	
#	DATE	VER#	DESCRIPTION OF CHANGE
1	DEC/18/97	1.00	FIRST PROTOTYPE
2	MAY/15/98	1.20	SWITCH #3424->#3407_ADD_C7
3	JUN/19/98	1.30	PC#5768 C7 10u->15u
4	JUL/01/98	1.40	PC#5794 L2 400uH 14AWG->430uH_18AWG
5	AUG/27/99	1.50	INPUT ALTERED_FOR_DISH
6	D	V	N
7	D	V	N
8	D	V	N
9	D	V	N
10	D	V	N

 YORKVILLE	DATE: AUG/27/99
	NAME: E404.SCH
TITLE: E404-CROSS-OVER	
MODELS: ELITE E404	
SCH ISSUE: 1.50	





M543.PCB DATABASE HISTORY

MODEL(S) :- E404/E408

#	DATE	VER#	DESCRIPTION OF CHANGE
1	NOV/97	1.P1	FIRST PROTOTYPE
2	NOV/27/97	1.P2	INPUT_PCB_REDONE
3	FEB/20/98	.	.
4	MAY/15/98	2.00	BI-AMP SWITCH #3424->#3407_ADD_C7
5	JUN/19/98	2.10	PC#5768 C7 10U->15u
6	JUL/01/98	3.00	PC#5794 L2 400uH 14AWG->430uH 18AWG
7	.	.	DEL C6 10u/100V R1 3R9 10W
8	.	.	PC#5793 UPDATE FOR_E408
9	AUG/18/99	4.00	REDO_FOR_DISH
10	D	V	N
11	D	V	N

ISSUE# 4.00	PCB#	MODEL
DATE SEP/01/99	M543	E404

SOLDERSLIDE
PCB MECH