

 Roland

 KEYBOARD CONTROLLER

**PC-200**

Owner's Manual

English .....	Page	5
Deutsch .....	Seite	13
Français .....	Page	21
Italiano .....	Pagina	29
日本語 .....	ページ	37

For West Germany

## Bescheinigung des Herstellers/Importeurs

Hiermit wird bescheinigt, daß der/die/das  
**Roland PC 200 Midi Keyboard Controller**  
 (Gerät, Typ, Bezeichnung)

in Übereinstimmung mit den Bestimmungen der  
**Amtsbl. Vfg 1046/1984**  
 (Amtsblattverfügung)

funk-entstört ist.

Der Deutschen Bundespost wurde das Inverkehrbringen dieses Gerätes angezeigt und die Berechtigung zur Überprüfung der Serie auf Einhaltung der Bestimmungen eingeräumt.

**Roland Corporation Osaka/Japan**

Name des Herstellers/Importeurs

For the USA

## RADIO AND TELEVISION INTERFERENCE

**WARNING** — This equipment has been verified to comply with the limits for a Class B computing device, pursuant to Subpart J, of Part 15, of FCC rules. Operation with non-certified or non-verified equipment is likely to result in interference to radio and TV reception.

The equipment described in this manual generates and uses radio frequency energy. If it is not installed and used properly, that is, in strict accordance with our instructions, it may cause interference with radio and television reception. This equipment has been tested and found to comply with the limits for a Class B computing device in accordance with the specifications in Subpart J, of Part 15, of FCC Rules. These rules are designed to provide reasonable protection against such a interference in a residential installation. However, there is no guarantee that the interference will not occur in a particular installation. If this equipment does cause interference to radio or television reception, which can be determined by turning the equipment on and off, the user is encouraged to try to correct the interference by the following measure.

- Disconnect other devices and their input/output cables one at a time. If the interference stops, it is caused by either the other device or its I/O cable. These devices usually require Roland designated shielded I/O cables. For Roland devices, you can obtain the proper shielded cable from your dealer. For non-Roland devices, contact the manufacturer or dealer for assistance.
- If your equipment does cause interference to radio or television reception, you can try to correct the interference by using one or more of the following measures.
  - Turn the TV or radio antenna until the interference stops
  - Move the equipment to one side or the other of the TV or radio.
  - Move the equipment farther away from the TV or radio.
  - Plug the equipment into an outlet that is on a different circuit than the TV or radio. (That is, make certain the equipment and the radio or television set are on circuits controlled by different circuit breakers or fuses.)
  - Consider installing a rooftop television antenna with coaxial cable lead-in between the antenna and TV. If necessary, you should consult your dealer or an experienced radio/television technician for additional suggestions. You may find helpful the following booklet prepared by the Federal Communications Commission: "How to Identify and Resolve Radio — TV Interference Problems"

This booklet is available from the U.S. Government Printing Office, Washington, D.C., 20402, Stock No. 004-000-00345-4.

For Canada

### CLASS B

### NOTICE

This digital apparatus does not exceed the Class B limits for radio noise emissions set out in the Radio Interference Regulations of the Canadian Department of Communications.

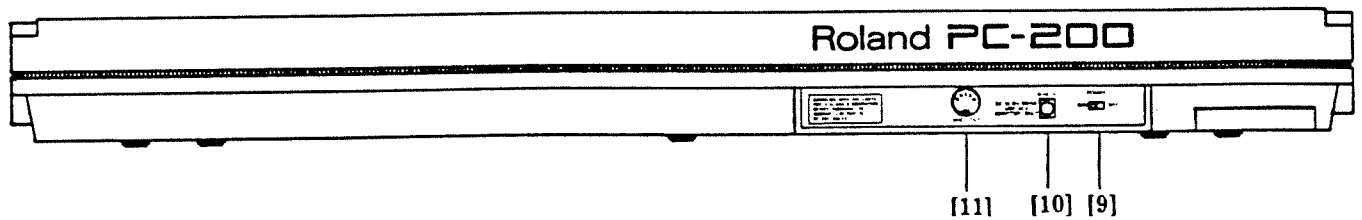
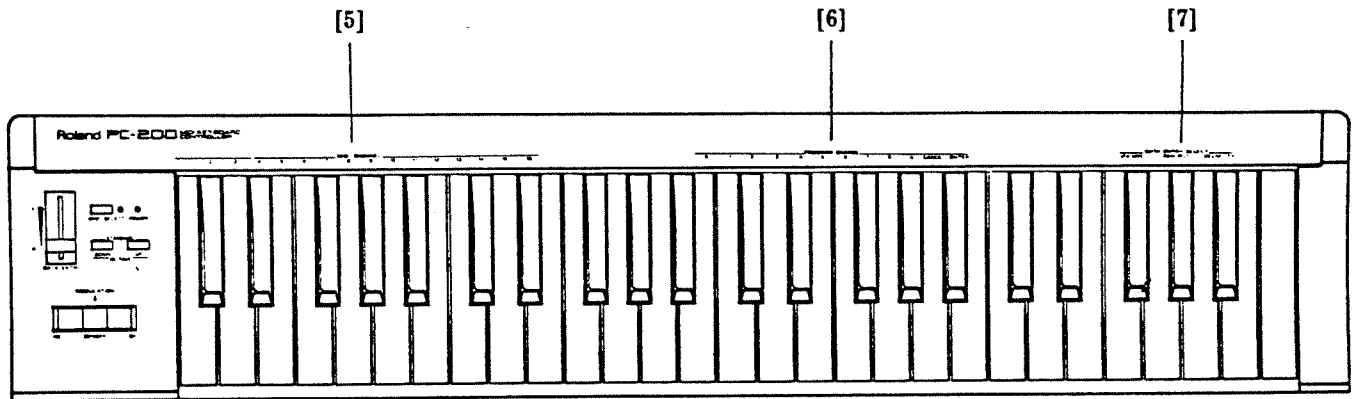
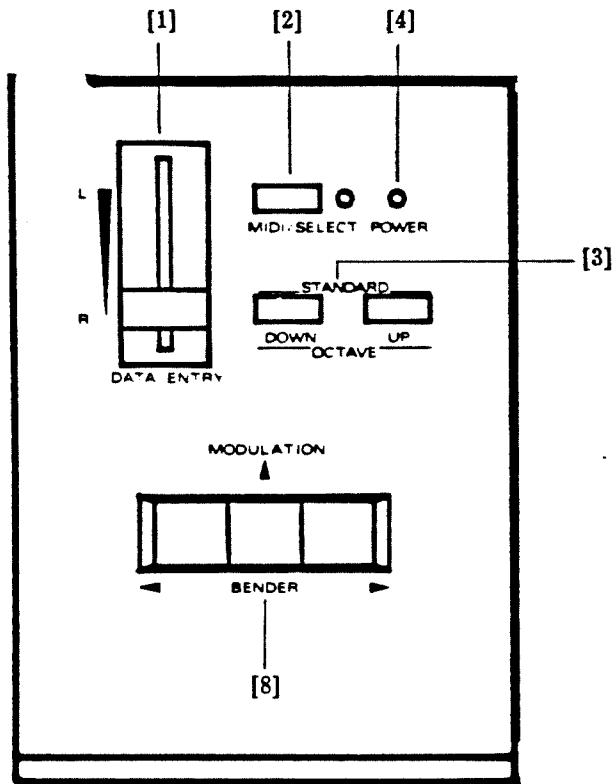
### CLASSE B

### AVIS

Cet appareil numérique ne dépasse pas les limites de la classe B au niveau des émissions de bruits radioélectriques fixés dans le Règlement des signaux parasites par le ministère canadien des Communications.

Copyright © 1990 by ROLAND CORPORATION

All rights reserved. No part of this publication may be reproduced in any form without the written permission of ROLAND CORPORATION.



**U. S. A.**

Roland Corp US  
7200 Dominion Circle  
Los Angeles, CA. 90040-3647  
U. S. A.  
☎ (213) 685-5141

**CANADA**

Roland Canada Music Ltd.  
(Head Office)  
13880 Mayfield Place  
Richmond B. C., V6V 2E4  
CANADA  
☎ (604) 270-6626

Roland Canada Music Ltd.  
3469 rue Ashby,  
St Laurent,  
Quebec H4R 2C1  
CANADA  
☎ (514) 335-2009

Roland Canada Music Ltd.  
Unit B-12, 1515 Matheson Blvd  
Mississauga, Ontario L4W 2P5  
CANADA  
☎ (416) 625-4880

**AUSTRALIA**

Roland Corporation  
(Australia) Pty. Ltd.  
(Head Office)  
38 Campbell Avenue  
Dee Why West, NSW 2099  
AUSTRALIA  
☎ (02) 982-8266

Roland Corporation  
(Australia) Pty. Ltd.  
(Melbourne Office)  
50 Garden Street  
South Yarra, Victoria 3141  
AUSTRALIA  
☎ (03) 241-1254

**NEW ZEALAND**

Roland Corporation (NZ) Ltd.  
97 Mt. Eden Road, Mt. Eden,  
Auckland 3  
NEW ZEALAND  
☎ (09) 398-715

**UNITED KINGDOM**

Roland (UK) Ltd.  
Amalgamated Drive  
West Cross Centre, Brentford,  
Middlesex TW8 9EZ,  
UNITED KINGDOM  
☎ (01) 568-4578

**WEST GERMANY**

Roland Elektronische  
Musikinstrumente  
Handelsgesellschaft mbH  
Oststrasse 96,  
D-2000 Norderstedt  
WEST GERMANY  
☎ 040/52 60 09 25

**BELGIUM/HOLLAND/  
LUXEMBOURG**

Roland Benelux N. V.  
Houtstraat 1  
B-2431 Oevel-Westerlo  
BELGIUM  
☎ 014-58 45 39

**DENMARK**

Roland Scandinavia A/S  
Langebrogade 6, Postbox 1937.  
DK-1023 Copenhagen K.  
DENMARK  
☎ (01) 95 31 11

**SWEDEN**

Roland Scandinavia A/S  
Swedish Sales Office  
DanvikCenter 28A, 2tr.  
S-131 30 Nacka,  
SWEDEN  
☎ 08-702 00 20

**NORWAY**

Roland Scandinavia A/S  
(Division Norway)  
Lilleakerveien 2  
N - 0283 Oslo 2  
NORWAY  
☎ (02) 730074

**FINLAND**

OY Musiikki Fazer Musik AB  
Takomotie 3  
00380 Helsinki 38,  
FINLAND  
☎ 05 56551

**ITALY**

Roland Italy S.p.A  
Via delle Industrie, 8  
20020 Arese (MI)  
ITALY  
☎ 02 - 93581311

**SWITZERLAND**

Roland CK (Switzerland) AG  
Hauptstrasse 21  
4456 Tenniken/Switzerland  
☎ 061 - 98 60 55  
Service: Musitronic AG,  
Gerberstrasse 5  
4410 Liestal/Switzerland  
☎ 061 - 921 68 82

**FRANCE**

Musikengro  
102, Avenue Jean-Jaures  
69367 Lyon Cedex 07  
FRANCE  
☎ (7) 858-54 60

Musikengro  
(Paris Office)  
Centre Region Parisienne  
41 rue Charles-Fourier,  
94400 Vitry s/Seine  
FRANCE  
☎ (1) 4680 86 62

**SPAIN**

Roland Electronics  
de España S.A.  
Bolivia 239  
08020 Barcelona  
SPAIN  
☎ 34-307 47 12

**AUSTRIA**

E. Dematte & Co.  
Neu-Rum Siemens-Strasse 4  
A-6021 Innsbruck Box 591  
AUSTRIA  
☎ 43 (05222) 63 4510

**GREECE**

A. Andreadis/V. Dimitriadis & Co. Ltd.  
2 Fidiou Str.  
106 78 Athens  
GREECE  
☎ 3620130

**PORTUGAL**

Casa Caius Instrumentos Musicais Lda.  
Rua de Santa Catarina 131  
Porto  
PORTUGAL  
☎ 2 - 38 44 56

**HUNGARY**

Intermusica Ltd.  
Warehouse Area 'DEPO'  
Budapest, P.O. Box 3,  
2045 Torokbalint  
Budapest  
HUNGARY  
☎ 1868905

## **SPECIFICATIONS**

### **KEYBOARD:**

49 key velocity sensitive

### **Data Entry:**

Volume/Pan Pot/Velocity

### **Octave:**

Standard/Up/Down

### **MIDI Select:**

MIDI Channels (1-16)

Program Change Numbers (1-128)

Pitch Bender/Modulation Lever

### **Rear panel terminal:**

- Power on/off switch
- AC Adaptor socket
- MIDI OUT Socket

### **DIMENSIONS:**

816,5×175×80 mm.

### **WEIGHT:**

Kg 2,5

### **Optional:**

- BOSS AC Adaptor ACA 220 (9V/300 mA) for 220 V connection
- BOSS AC Adaptor ACA 240 (9V/100 mA) for 240 V connection
- BOSS AC Adaptor ACA 120 (9V/200 mA) for 117 V connection
- BOSS AC Adaptor ACA 100 (9V/150 mA) for 100 V connection

## FEATURES

- The PC-200 is a 49-note, polyphonic MIDI KEYBOARD CONTROLLER with dynamic keyboard.
- One MIDI OUT Socket is provided for connecting other MIDI devices.
- Being the PC-200 a MIDI keyboard controller, it is not provided with an internal sound source system, but it can be connected to other MIDI devices such as sequencers, synthesizers, expanders, computers.

Thank you for purchasing the ROLAND PC-200

The PC-200 is an easy-to-operate keyboard that anyone can play.

This Owner's Manual is written to help you have many years of musical enjoyment with your PC-200.

## PANEL DESCRIPTION

- [1] MULTIFUNCTION MASTER CONTROL
- [2] MIDI PARAMETER SELECTION & KEYBOARD SENSITIVITY ADJUSTMENT button
- [3] OCTAVE SELECTION buttons
- [4] Power on LED
- [5] MIDI CHANNEL SELECTION
- [6] PROGRAM CHANGE SELECTION
- [7] VOLUME, PAN POT & VELOCITY SELECTION
- [8] PITCH BENDER/MODULATION LEVER
- [9] POWER SWITCH
- [10] SOCKET FOR AC ADAPTOR (OPTIONAL)
- [11] MIDI OUT SOCKET

## ACCESSORIES SUPPLIED

Supplied with your PC-200 are 6 alkaline batteries type MN 1500.

These will be found into the package (Batteries life expectance= approximately 30 Hours).

- Overturn the instrument.
- Open the plastic cover and take out the battery holder, located in the lower part of the instrument.
- Insert batteries in the appropriate holder.
- Place the holder into the appropriate location and close the plastic cover.

## IMPORTANT NOTES

- If you wish to use the instrument with external AC Adaptor, use only type Boss ACA (optional) and follow these precautions:
- The appropriate power supply for the instrument (100, 120, 220 or 240 V) is shown on the AC ADAPTOR name plate. Please make sure that the line voltage in your country meets the requirements.
- Please do not use the same socket used for any noise generating device (such as a motor, variable lighting system).
- It is normal for this unit to become hot while being operated.
- If the unit is not to be used for a long period of time, unplug the external AC Adaptor from the AC line.
- Disconnect the AC Adaptor immediately in the event of an electrical storm.
- Before setting up this keyboard with other MIDI devices, turn this keyboard off along with all other units.
- Be sure to connect the MIDI cable securely. If the MIDI cable is disconnected while the instrument is being played, various troubles will occur (e.g. the note may continue to sound).
- Static electricity may cause the built-in computer to malfunction. Should this occur, simply reset the instrument by turning the power switch off and then after a few seconds, back on.
- This instrument might not operate correctly if turned on immediately after being turned off. If this happens, simply turn it off and after a few seconds later, turn it on again.
- Operating the PC-200 near a neon light, fluorescent lamp, TV or CRT display, may cause noise interference. If so, change the position of the instrument.
- To avoid risk of electric shock, do not perform any servicing. Refer all servicing to qualified service personnel.

## THE CARE OF YOUR PC-200

To ensure the best use and full enjoyment of your PC-200, please read this guide carefully and thoroughly.

### ROOM LOCATION

Avoid using this instrument in excessive heat or humidity conditions or where it may be affected by direct sunlight or dust and avoid places subject to high vibrations.

### CABINET CARE

Use a soft dry cloth for dusting. To remove fingerprints or dulling film, use a soft cloth slightly dampened with water and a little mild detergent. Immediately wipe dry with a soft cloth. Do not use solvents such as paint thinners.

## OPERATION

After having inserted the six batteries into the appropriate holder, press the power On/Off switch [9] to operate the PC-200.

To use the PC-200 with the AC Adaptor (optional), connect the AC Adaptor to the 9 Volts DC IN socket [10], located on the rear panel of the instrument.

Make sure that the line voltage in your country meets the requirements. Connect the AC Adaptor to AC line. Press the power on/off switch [9] to activate the instrument.

## DATA ENTRY MASTER CONTROL

The DATA ENTRY Master control [1] enables the modification of the following parameters:

- VOLUME [7]
- PAN POT [7]
- VELOCITY [7]

### VOLUME (CC 7)

When the instrument is turned on, the DATA ENTRY control [1] affects the VOLUME: raising or lowering this control, a modification of the volume can be obtained.

To address the DATA ENTRY to the VOLUME follow this procedure:

- Press the MIDI/SELECT button [2] (LED lit)
- Press F #5 key (VOLUME)
- Press the MIDI/SELECT button [2] once more (LED off).

### PAN POT (CC 10):

This parameter is used to change the PANORAMA STEREO effect of a sound.

To hear this effect, connect the PC-200 to a stereo Expander or Synthesizer or other stereo devices.

To address the DATA ENTRY to PAN POT follow this procedure:

- Press the MIDI/SELECT button [2] (LED lit)
- Press G #5 key (PAN POT)
- Press the MIDI/SELECT button [2] once more (LED off).

At this point it is possible to modify the PANORAMA STEREO effect moving the DATA ENTRY control.

A sound effect from the left side (L) can be heard by moving the DATA ENTRY control away from you.

A sound effect from the right side (R) can be heard by moving the DATA ENTRY control towards you.

The balance of the sound can be obtained by moving the DATA ENTRY control slider to the central position.

### VELOCITY:

This parameter is used to modify the keyboard dynamic sensitivity.

Moving the DATA ENTRY control away from you, various dynamic sensitivity levels will be obtained and the feature will almost be disabled.

To raise the dynamic sensitivity level, simply move the DATA ENTRY slider away from you. To lower the dynamic sensitivity level simply move the slider towards you.

Moving the DATA ENTRY control towards you, various levels of dynamic sensitivity can be obtained: the maximum value is reached when you have to play hard to make the keyboard sound, just like the keyboard of a piano.

To address the DATA ENTRY control to «VELOCITY» parameter, follow this procedure:

- Press the MIDI/SELECT button [2] (LED lit)
- Press A #5 key (VELOCITY)
- Press the MIDI/SELECT button [2] once more (LED off).

At this point the dynamic sensitivity level (VELOCITY) can be modified moving the DATA ENTRY control.



## PITCH BENDER/MODULATION LEVER

By moving the Pitch Bender/Modulation lever [8], bending can be obtained. Moving the lever to the right raises the pitch and moving the lever to the left lowers the pitch of the note. If the lever is released (central position), the note returns to normal pitch. This lever can be used to give a guitar bending effect or the sliding of the trombone.

Pushing the same lever away from you will add modulation (vibrato/tremolo) to each tone. Releasing the lever will cancel the modulation effect.

### OCTAVE [3]

UP:

DOWN:

STANDARD:

### OCTAVE «UP»

Pressing the «UP» button, the PC-200 will be transposed of twelve semitones (one octave) up and the keyboard sounds from C3 (48) to C7 (96).

### OCTAVE «DOWN»

Pressing the «DOWN» button, the PC-200 will be transposed of twelve semitones (one octave) down and the keyboard sounds from C1 (24) to C5 (72).

### STANDARD:

Pressing both buttons, the original octave will be reset (default), and the keyboard will sound from C2 (36) to C6 (84).

## MIDI CHANNEL SELECTION:

To select MIDI channels 1-16 (transmission):

- Press the MIDI/SELECT button [2], the corresponding led will light. Now the keyboard is disabled, as it is programming.
- Select anyone of the 16 Midi Channels [5] by pressing one of the following keys:

C 2 = tx midi ch 1  
C# 2 = tx midi ch 2  
D 2 = tx midi ch 3  
D# 2 = tx midi ch 4  
E 2 = tx midi ch 5  
F 2 = tx midi ch 6  
F# 2 = tx midi ch 7  
G 2 = tx midi ch 8  
G# 2 = tx midi ch 9  
A 2 = tx midi ch 10  
A# 2 = tx midi ch 11  
B 2 = tx midi ch 12  
C 3 = tx midi ch 13  
C# 3 = tx midi ch 14  
D 3 = tx midi ch 15  
D# 3 = tx midi ch 16

- Pressing the MIDI/SELECT button once more, the corresponding led will be turned off and the keyboard will be enabled to play again.

## PROGRAM CHANGE SELECTION

It is possible to send Program change numbers from 1 to 127.

— Press the MIDI/SELECT [2] button, the corresponding led will light. Now the keyboard will be disabled, as it is programming.

— Press one of the following keys [6] to select:

B 3 = program change 0  
C 4 = program change 1  
C# 4 = program change 2  
D 4 = program change 3  
D# 4 = program change 4  
E 4 = program change 5  
F 4 = program change 6  
F# 4 = program change 7  
G 4 = program change 8  
G# 4 = program change 9  
A 4 = CANCEL  
A# 4 = ENTER

After selecting a program change number, press the ENTER button (A # 4) to send it.

### Example:

To send program change no. 125 press C 4 (1), C# 4 (2), E 4 (5) keys in sequence, then press A # 4 (ENTER).

Whenever the A # 4 (ENTER) key is pressed, the last program change selected will be sent.

When the instrument is turned on (default setting), pressing A # 4 (ENTER) without digiting any other number, the program change no. 1 will always be sent.

If a program change number is digitized by mistake, press A 4 (CANCEL) key to cancel the operation, then perform the correct procedure again.

— Press the MIDI/SELECT button once more, the corresponding led will be turned off and the keyboard is enabled to play again.

## MIDI CONTROL

M.I.D.I. is the acronym for Musical Instrument Digital Interface.

MIDI is a standardized interface by which all digital musical instruments also equipped with MIDI connections can exchange data. This means that your PC-200 can be used as a MIDI control keyboard - to control other MIDI devices (synthesizers, expanders, computers etc.).

There is one MIDI «OUT» socket [11] on the rear panel of the PC-200 to send MIDI messages to control external MIDI devices.

## IF YOUR PC-200 FAILS TO OPERATE

Make sure that the 6 Alkaline Batteries (MN 1500) are not below their charge limits.

Also check that the Batteries make good contact with the holder.

- \* When using the AC Adaptor, make sure that the AC Adaptor cord is firmly plugged into the socket [10] on the rear panel. Make sure that the AC cord of the ADAPTOR is firmly plugged into the AC wall outlet.
- \* Also check that the AC wall outlet is not faulty. Plug in a lamp or radio to test the wall outlet.
- \* Be sure the ON/OFF switch [9] (located on the rear panel) is ON.
- \* In the event the instrument is still inoperable, your Roland technician or dealer is best qualified to provide you with competent service. Do not attempt any adjustments or repairs by yourself.

## DEFAULT SETTING

The PC-200 will always select the following features, when it is turned on (these are often called Default settings):

- DATA ENTRY is enabled to modify the Volume.
- Midi Channel no. 1 transmitted
- Program change no. 1 transmitted when the ENTER key is pressed (see MIDI Controls)
- DEFAULT OCTAVE will be from C 2 (36) to C 6 (84).

# MIDI IMPLEMENTATION CHART

ROLAND PC-200

VERSION: 1.00

FUNCTION		TRANSMITTED	RECOGNIZED	REMARKS
Basic	Default	1	X	
Channel	Changed	1:16	X	
Mode	Default Messages Altered	MODE 3 X *****	X X	
Note	True voice	24—96 *****	X	
Velocity	Note ON Note OFF	○ X	X X	
After Touch	Keys Ch's	X X	X X	
Pitch Bender		○	X	
Control Change	01 07 10	○ ○* ○*	X X X	MODULATION VOLUME PAN POT
Program Change:	True #	1—128 *****	X	
System Exclusive		X	X	
System: Common	: Song Pos : Song Sel : Tune	X X X	X X X	
System Real Time	: Clock : Commands	X X	X X	
Aux Messages:	: Local ON/OFF : All notes OFF Active Sense : Reset	X X ○ X	X X X X	
Notes	* Can be set ○ or X Manually			

Mode 1: OMNI ON, POLY  
Mode 3: OMNI OFF, POLY

Mode 2: OMNI ON, MONO  
Mode 4: OMNI OFF, MONO

○: YES  
X: NO



 Roland®

---

**10619**

UPC

10619



10981

 Roland®