

SOFTWARE INSTALLATION

Now, as The Band sings “Across the Great Divide,” pick the sections that are right for you and dive in. Mac owners start here, PC owners proceed to page 52.

If you are unsure of any standard Macintosh or PC maneuvers, such as clicking mouses and copying files, etc., please refer to your computer manuals—you’ll need to know those basics.

MACINTOSH SYSTEMS

You can either install UltraMix Pro by itself or with OMS or FMS. If you are already using OMS or FMS, you should install UltraMix Pro by itself to avoid accidentally erasing your studio setup.

NOTE: OMS and FMS are very similar in function and setup. So we’re going to show an OMS example – FMS will be about the same. Consult their respective manuals for more info.

1. Restart your Mac with Extensions off. (Hold down the Shift key while restarting.) Insert the UltraMix Install diskette and double-click on its icon.



2. Read the “Read Me” file before going any further. It may include information that has been changed or updated since the publication of this manual.



3. Double-click the Installer icon.



UltraMix Pro™ 1.11 Installer

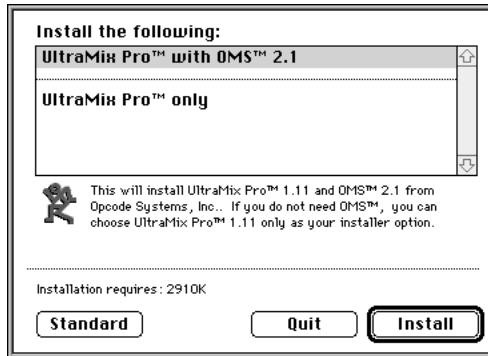
Then you'll see the following:



4. Click on Continue. Next you'll see this screen:



5. To install both UltraMix Pro and OMS, click the Install button. To install UltraMix Pro without OMS, click on the Custom button and choose the UltraMix Pro Only option.



6. Click Install.



7. Follow the prompt to select where you want UltraMix installed. Click Install once more, with feeling.

The installer copies UltraMix Pro, OMS Setup, the OMS system extension, and the OMS Folder into their proper places on your hard disk.

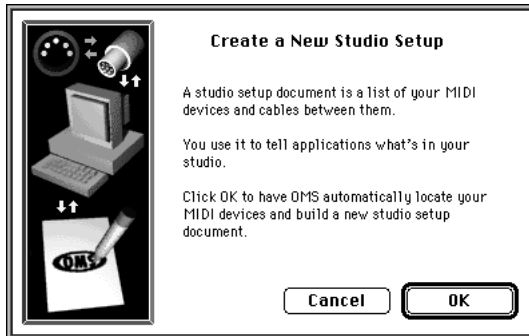
NOTE: The OMS system extension is placed in the Extensions folder and is titled "Open Music System." Don't confuse the OMS extension with the OMS Folder that is installed directly in the System Folder. The OMS Folder contains files such as the Mackie Device info file, which allows OMS to support Mackie devices.

SETTING UP OMS

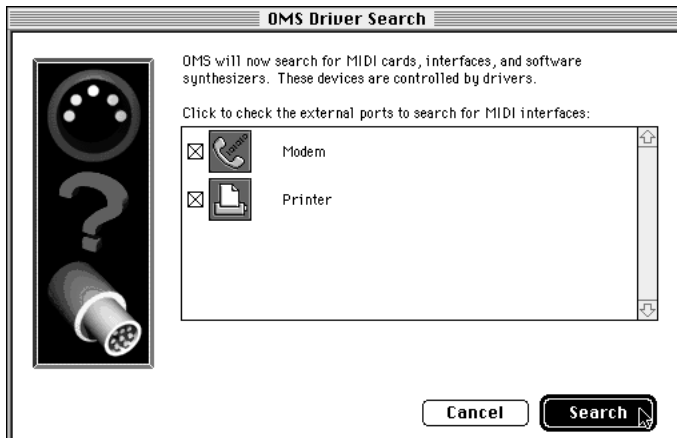
1. Double-click the OMS Setup icon.



If you're installing OMS for the first time, the following screen will appear:

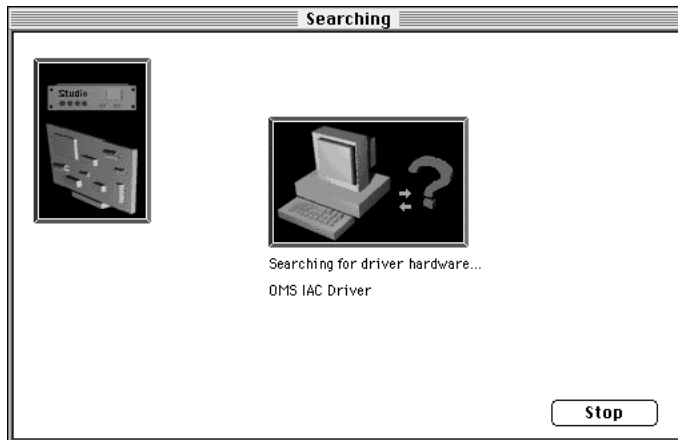


2. Click OK.

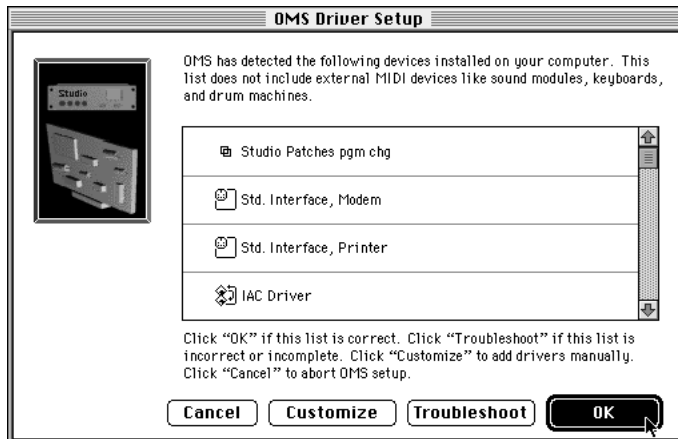


3. Check the box (Printer Port or Modem Port) corresponding to the port your MIDI interface is plugged into.

4. Click Search. You will then see the following screen, which will show you that OMS is searching for any MIDI interfaces connected to the port(s) you checked in step 3.

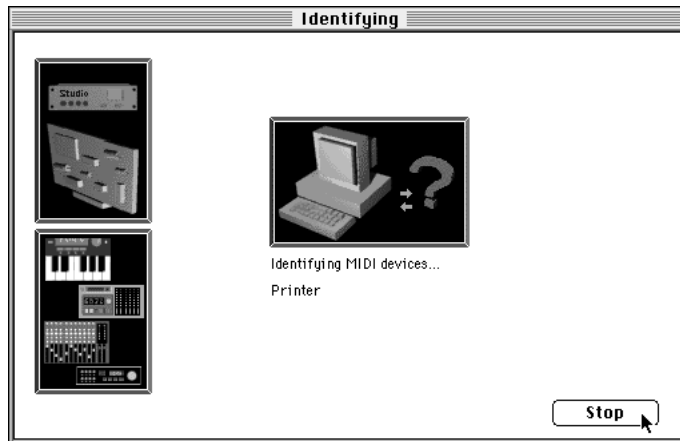


5. Then you'll see a screen that indicates which interfaces OMS found in its search. If OMS found the correct interface, click OK.

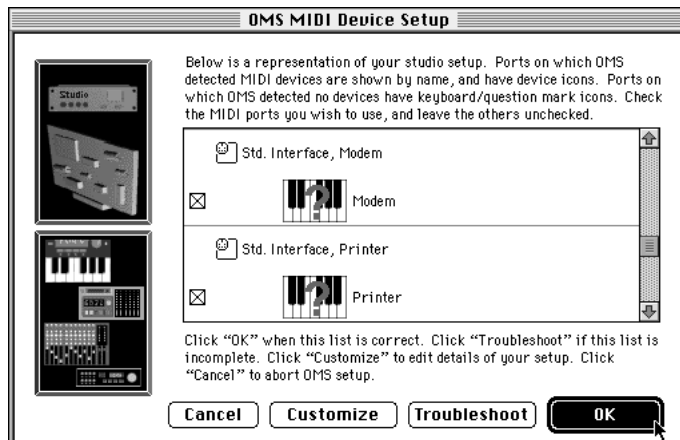


If you run into any problems locating a MIDI interface, read the instructions in the dialog box on-screen and heed their advice. If you're still having problems, inspect or replace your cables. Also, make sure that any "thru" switches on the MIDI interface are set to "MIDI."

6. Next, you'll see this screen while OMS searches for MIDI devices, like synths and such, that are connected to the MIDI ports on your MIDI interface.



7. When OMS finishes this search, it will display this dialog box:



Read the instructions, and if everything's peachy, click OK.

8. At this point you'll be prompted to save your OMS studio setup. Go for it.

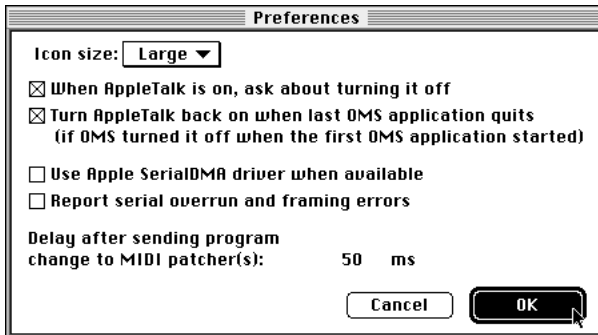


OMS opens a studio setup window that lists your MIDI interface(s).

9. Choose Preferences from the Edit menu.

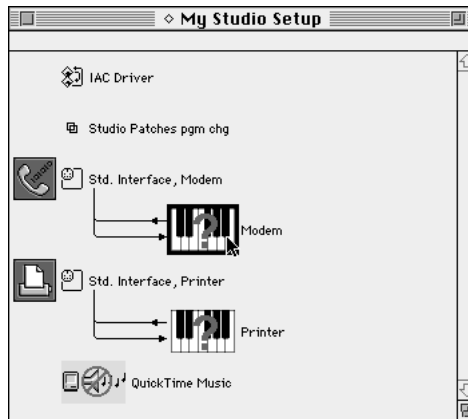


You'll then see this dialog box:



If you use AppleTalk, make sure both of the AppleTalk-related checkboxes are checked. Uncheck the “Report serial overrun...” checkbox. Leave the “SerialDMA” box alone—if OMS decides your system needs this, the box will be checked. If not, then OMS has decided you don’t need it. Do not second guess OMS!

12. If OMS found devices in its MIDI device search, indicated by the icon showing a keyboard with a question mark, doubleclick on that icon.



If it didn't, choose New Device from the studio menu.



You will then see this dialog box:

The dialog box is titled "MIDI Device Info". It features a keyboard icon on the left. The "Manuf:" dropdown is empty, "Model:" is empty, and "Device ID:" is set to "0". The "Name:" text field contains "(unnamed)". There are two checked checkboxes: "Is controller" and "Is multitimbral". To the right, under "Receives" and "Sends", there are three rows of checkboxes: "MIDI Time Code", "MIDI Beat Clock", and "MIDI Machine Control". Below this is a "Receive Channels" section with 16 columns numbered 1 to 16, each containing an "X". At the bottom are "Cancel" and "OK" buttons.

12. For Manufacturer, choose Mackie, and for model, choose Ultra-34.

13. Select Is Controller and then click underneath the number 16 in the Receive Channels field.

14. Click the box next to MIDI Time Code under the Sends column.

The dialog box should look like it does below. Click OK.

The dialog box is titled "MIDI Device Info". The "Manuf:" dropdown is set to "Mackie", "Model:" is set to "Ultra-34", and "Device ID:" is set to "16". The "Name:" text field contains "Ultra-34". The "Is controller" checkbox is checked, while "Is multitimbral" is unchecked. Under "Receives" and "Sends", the "MIDI Time Code" checkbox under the "Sends" column is checked. In the "Receive Channels" section, the 16th column is checked with an "X". At the bottom are "Cancel" and "OK" buttons, with a mouse cursor pointing at the "OK" button.

15. When you're done customizing your studio setup, choose Save from the File menu.



You can use OMS to create as many different studio setups as you want, but OMS recognizes only one setup as current at any given time. If you do not make your new studio setup current, OMS (and UltraMix) may not recognize the devices that you defined in it. If a studio setup is current, OMS will display a diamond to the left of the studio setup name in its window title.

12. To quit Setup, choose Quit from the File menu.

NOTE: If you have a multi-port MIDI interface, click on the number to the left of the device you just added, as shown in the picture below, and type the number of the port that your Ultra-34 is connected to. Our setup shows the Ultra-34 on port 1 and the SY-88 on port 2 of the Studio 4 interface. Both show two-way MIDI communication with the interface.



If you have other devices connected to your MIDI interface, you should add each device to your OMS studio setup by repeating steps 5-10, substituting the appropriate manufacturer, model, and settings.

NOTE FOR FREE MIDI SYSTEM (FMS) USERS:

Please refer to the FMS owner's manual for FMS installation and setup instructions.

DEFINING A SYNCHRONIZATION SOURCE

Unless you are using UltraMix alone (with the intent of automating only MIDI sound sources using MIDI files), you will need an external synchronization source to lock the timing of UltraMix to your music playback.

NOTE: Windows® 95 users don't need to worry about defining a sync source, since that platform takes care of it automatically. We're saying this only so you snoopy Windows users who haven't yet skipped over to page 52 won't feel left out.

UltraMix is a MIDI-based system and therefore uses MIDI time code (MTC) for syncing. SMPTE must be converted to MTC using an appropriate interface or translator. SMPTE time code may be output from one of the following:

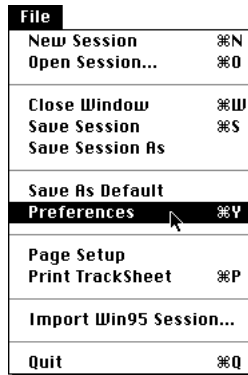
- A spare track or dedicated address track on your analog or digital recorder
- The address track on the video machine when doing audio sweetening
- The SMPTE time code output from your DAW or some other external sequencer system

Whatever the case, you must tell UltraMix which external synchronization source to use.

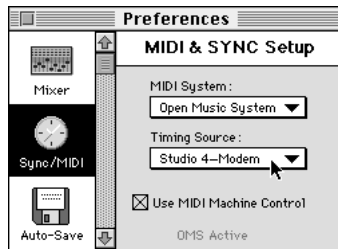
Important: For UltraMix to recognize a synchronization source, the source device must be defined in your OMS or FMS studio setup, and its OMS/FMS device definition must have the MIDI time code Receives and Sends boxes checked.

 *To define a synchronization source:*

1. Open UltraMix by double-clicking its icon.
2. Choose Preferences from the File menu.



3. Click on the clock icon (Sync) on the left side of the window.



4. Choose the synchronization source that you want to use from the Timing Source dropdown menu.
The menu shows each device in your OMS/FMS studio setup that can act as a synchronization source.
5. Make sure that Send Machine Control is selected.
If you do NOT want the UltraMix and UltraPilot transport controls to affect the controls on your tape deck or other external synchronization source, you can turn this option off by clearing the Send Machine Control checkbox.
6. Close the Preferences window.
7. If you want UltraMix to remember this synchronization setting, choose Save As Default from the File menu.

File	
New Session	⌘N
Open Session...	⌘O
Close Window	⌘W
Save Session	⌘S
Save Session As	
Save As Default	
Preferences	⌘Y
Page Setup	
Print TrackSheet	⌘P
Import Win95 Session...	
Quit	⌘Q

Save As Default tells UltraMix to remember all of the current UltraMix preferences, including the Sync Source. If you do not choose Save As Default, you will have to define the synchronization source each time you open UltraMix.

NOTE: Save As Default also saves several other settings on your UltraMix Pro control bar, such as the Bypass mode or fader Record mode. These same control bar settings will come up each time you open UltraMix Pro unless you change them, then choose the Save As Default command.

ANOTHER NOTE: If your interface has software patching capability, such as Mark of the Unicorn's MIDI Time Piece or Opcode's Studio 4/5, set the interface's internal default patch to allow the computer to do all the MIDI routing.

8. Go to page 59 for Final Checkout. (Unless you want to read the Windows 95 stuff...)

FINAL CHECKOUT

Now it's time to make sure everything works together.

1. Open the UltraMix application (if it's not already open).

The transport window and an untitled session window should appear on the screen.

2. Push the BANK SELECT button on the UltraPilot (located on the right side). The red LEDs on channels 17-32 of the UltraPilot should light, and the glass faders on the screen should swap banks.

3. If your external sync device supports MMC, make sure Ext. Sync is not Bypassed. (When it's bypassed, the Ext. Sync button in the UltraMix transport window appears lit. Click it to turn Bypass off.) Press the Play/Stop button on the UltraPilot, or the spacebar on the computer keyboard.

Your tape should roll and the time code numbers in the Transport window should increase.

If this doesn't work, then something isn't quite right. Read through the setup and installation instructions again and see if you can get things straightened out. If you're still stumped, check Appendix G: Troubleshooting, on page 211.

Go Ahead – Make Your First (Fader) Move

1. Move a fader on the UltraPilot. If the corresponding fader on the computer screen moves, congratulations. You're now set to sail the sea of automation. If for some odd reason it doesn't work, again we suggest rereading the previous sections. And in that case, may we suggest liquid refreshment?